

XGF / XGL

Drum, Barrel and Tank Handling



Capacity (kg): 300 (more capacity on demand)



Lifting Height (mm): 1880/1660 (higher lifting on demand)

ATTACHEMENTS FOR
SPECIAL APPLICATIONS

■ XGF

The ideal solution to safely lift, transport, fill and empty drums and cylindrical containers. A mechanical clamp secures drums of varying diameters, and a hand operated turner precisely controls the forward rotation.



■ XGL

Version with hand operated turner that rotates and empties the drum to the side of the truck.



Features in detail:



■ MANUAL CLOSING:

A hand wheel closes the manual clamp and adjusts for different drum diameters.



■ MANUAL REDUCTION GEAR:

Hand operated mechanical rotator with reduction gears allows turning the drum with very little effort.

XRF / XRL

Tilting of industrial containers and cases



Capacity (kg): 400



Lifting Height (mm): n.d.

ATTACHEMENTS FOR
SPECIAL APPLICATIONS

■ XRF

The XRF / XRL's tilting forks make the picking of parts from containers safe and easy.

A hand operated pump tilts the load up to 85° to reach the bottom of the container.



■ XRL

Side load tilting option with +/- 20° tilting angle.



Features in detail:



■ CUSTOM SOLUTIONS:

Amanni will customize the width and length of the XRF forks to perfectly suit non-standard containers.



■ MANUAL OPERATION:

A safe and easy to use hand hydraulic pump powers the lifting or tilting function.

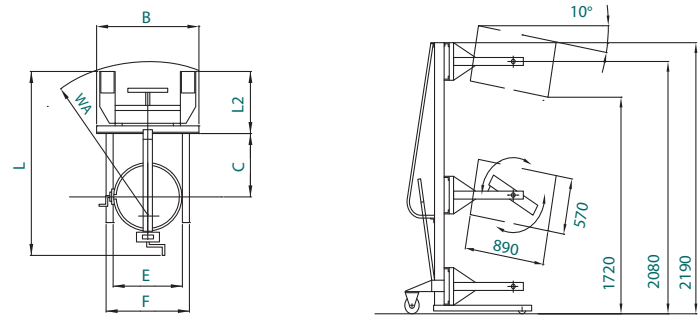


XGF

model		XGF
Q	Kg	300
C	mm	685
I	mm	/
L	mm	1550
X	mm	405
Y	mm	1100
L2	mm	585
E	mm	650
F	mm	750
h1	mm	1990
h2	mm	1880
h3	mm	1880
h4	mm	2000
B	mm	800
WA	mm	1190

STANDARD EQUIPMENT

- Manual drum tipper with reducer (300 kgs capacity)
- Lifting by fast manual pump (without load)
- Descent by lever
- 360° frontal drum rotation
- Parking brake
- Polyurethane single roller
- Polyamide wheels with polyurethane covering
- Safety components
- Manual traction

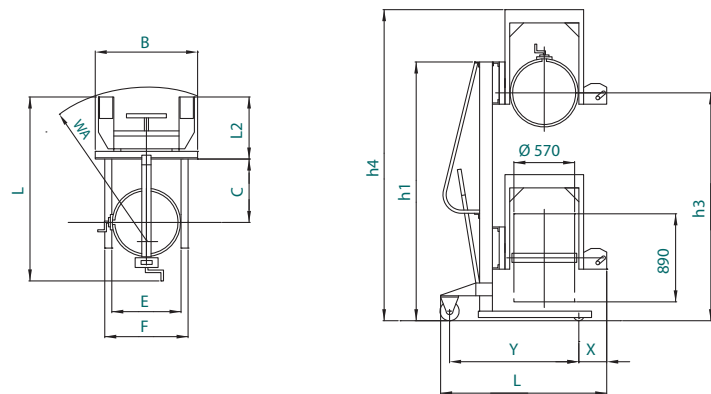


XGL

model		XGL
Q	Kg	300
C	mm	370
I	mm	/
L	mm	1465
X	mm	280
Y	mm	1115
L2	mm	585
E	mm	650
F	mm	750
h1	mm	1990
h2	mm	1330
h3	mm	1660
h4	mm	2300
B	mm	800
WA	mm	1190

STANDARD EQUIPMENT

- Manual drum tipper with reducer (300 kgs capacity)
- Lifting by fast manual pump (without load)
- Descent by lever
- 360° lateral drum rotation
- Parking brake
- Polyurethane single roller
- Polyamide wheels with polyurethane covering
- Safety components
- Manual traction

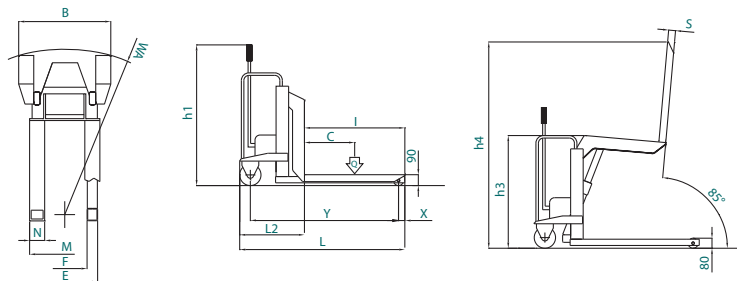


XRF

model		XRF
Q	Kg	1000
C	mm	400
I	mm	800
L	mm	1315
X	mm	50
Y	mm	1195
L2	mm	515
M	mm	560
N	mm	120
h1	mm	1120
h2	mm	900
h3	mm	1645
h4	mm	735
B	mm	530
F	mm	355
S	mm	55
WA	mm	1320

STANDARD EQUIPMENT

- Rated capacity 1000 Kgs
- Manual drum tipper with reducer (300 kgs capacity)
- Lifting by fast manual pump (without load)
- Descent by lever
- Fixed forks length mm. 800
- 85° max. tilting frontal angle
- Parking brake
- Polyurethane single roller
- Polyamide wheels with polyurethane covering
- Safety components
- Manual traction



XRL

model		XRL
Qi	Kg	1000
Qr	Kg	400
C	mm	450
I	mm	900
L	mm	1420
X	mm	176
Y	mm	1140
L2	mm	520
M	mm	445
N	mm	30
h1	mm	1230
h2	mm	800
B	mm	755
E	Kg	724
F	mm	540
S	mm	70
WA	mm	1265
à	mm	20°

STANDARD EQUIPMENT

- Rated capacity 1000 Kgs (Qi)
- Side tilter capacity 400 Kgs (Qr)
- Manual drum tipper with reducer (300 kgs capacity)
- Lifting by fast manual pump (without load)
- Descent by lever
- Fixed forks length mm. 800
- Tilting angle from -20° to +20°
- Parking brake
- Polyurethane single roller
- Polyamide wheels with polyurethane covering
- Safety components
- Manual traction

