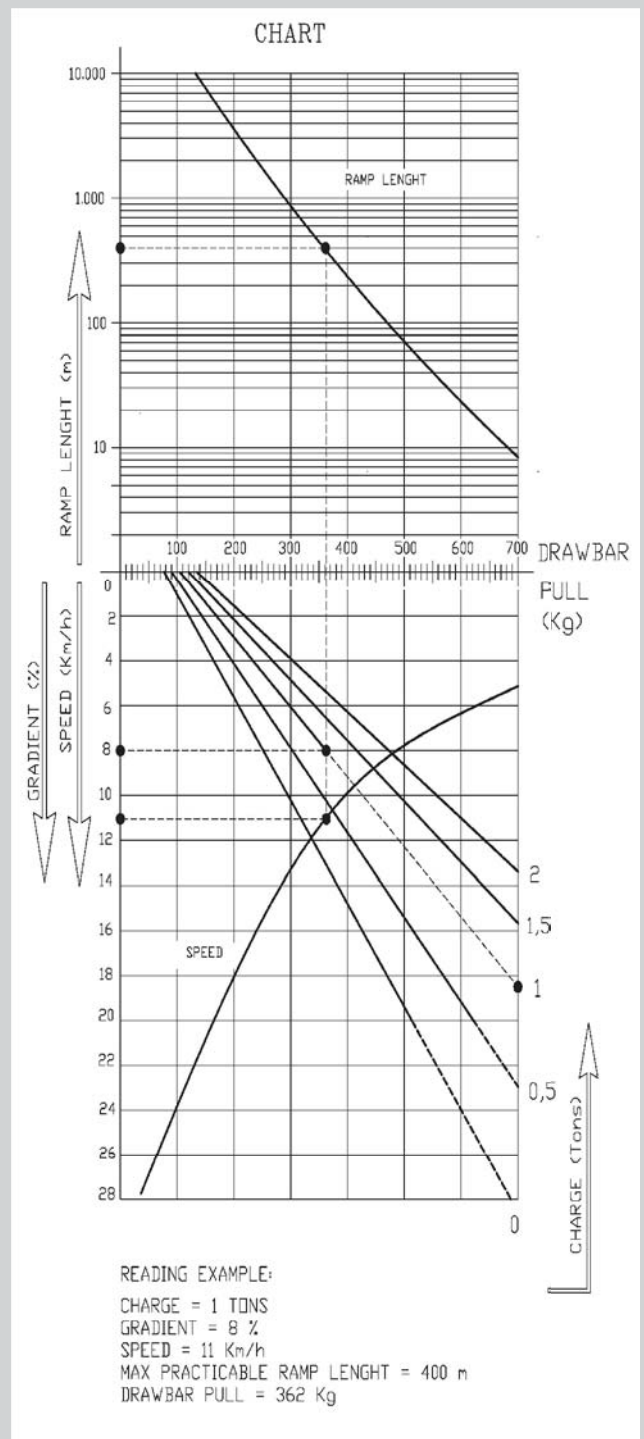


FEATURES	1	Manufacturer	SIMAI SpA		
	2	Model	PE 20		
	3	Towing capacity	S2=60'	t	2
	4	Power supply	Electric		
	5	Type of control	Sitting driver		
	6	Tire equipment	PN=Pneumatic SE=Extra-elastic	PN/SE	
	7	Wheels	fore/rear X=motive	2/2X	
	8	Platform size	length x width	mm	2445x1400
DIMENSIONS	9	Platform height	mm	810/875	
	10	Length	mm	3825	
	11	Ingombri	width	mm	1400
	12	height	mm	1862	
	13	height steering wheel	mm	1195	
	14	Turning radius	R1 fore	mm	3587
	15		R2 rear	mm	2404
	16		R3 inner	mm	757
	17	Aisle width	L1 fore 90°	mm	2750
	18		L2 rear 90°	mm	2750
	19	Wheelbase		mm	1900
	20	Track	fore/rear	mm	1160/1113
	21	Ground clearance	laden lowest point	mm	174
	22		centre	mm	217
PERFORMANCES	23	Speed	travel unladen/laden	Km/h	25/20
	24	Drawbar pull	per hour	Kg	100
	25	Max Drawbar pull	acceleration	Kg	700
	26	Gradeability	max unladen	%	See chart
			max laden	%	See chart
	27	Autonomy	50% unladen 50% laden	Km	55
	28	Weight unladen	with battery and cabin	Kg	2200
	29	Axle loading	fore/rear	Kg	1700/2500
	30	Tires	fore/rear	n°	2/2
	31		Dimensions fore	6.50-10	
32		Dimensions rear	6.50-10		
33	Brakes	service-parking	Ped/Man		
34		mechan(M) hydraulic(I) electrom(E)	I/M		
35		type	Drum		
36	Suspensions	axle fore/rear	Steel helical/leaf springs		
TRANSMISSION	37	Battery	voltage/capacity	V/Ah	48/400 480
	38		weight	Kg	670 - 764
	39		type	Armoured	
	40	Motor	drive: power rate S2=60'	KW	7,5 AC
	41		hydraulic steering: power rate S2=60'	KW	1,2
	42	Gear	type	Inverter AC	
	43		gear speed forward/reverse	1-1	
	44	Transmission	type	Reduction gear	



Dimensions are not binding and can be changed in any moment. The performances must be intended for brand new machines, after having completed the running-in tested in Milan Factory in normal climatic conditions. Performances and weight are to be intended with standard motors and battery (reported in bold) and with pneumatic tires. Some data can vary according to different equipments.



SIMAI SpA
 via Civesio 10
 20097 San Donato Milanese, Italy
 Tel: +39 02 5278541
 Fax: +39 02 5278544
 info@simai.it - www.simai.it